

# S300 圓鋸片研磨機

Circular Saw Blade Sharpening Machine

## Standard type circular sawblade sharpener 標準型鋼圓鋸片研磨機

### Instruction of Functions 功能介紹

- Desktop type machine 桌上型機種。
- Constant sharpening speed: 90 teeth/minute 研磨速度為固定式，每分鐘為90齒。
- It is applicable for grinding the straight teeth and the circular arc teeth. The teeth shape could be changed per your need only with a Spanner. 可研磨直型齒及圓弧齒，只需一支六角板手即可變換出所需之齒形。
- It is suitable to select and purchase the special bantamweight clamping seat of the sawblade for this machine, thus the little sawblade in 30 diameter could be ground. 本機可選購特殊小型鋸片夾緊座即可研磨外徑 $\phi$ 30之小鋸片。

### Easy to operate and adjust 操作調整簡易

- The clamping seat of the sawblade is reformed it endures the friction with special bearing to avoid the spring sheet's abrasion and to ensure the machine's sharpening accuracy and durable capability. 鋸片夾緊座經過改良，使用特殊軸承，承受磨擦力，不會造成彈簧片磨損，確保機器的研磨精度及耐用性。

### The Adjustment Of Saw Blade Thickness 鋸片厚度調整

- The saw blade thickness is adjusted by a precision graduator, which can accurately adjust the center point of the saw blade. 鋸片厚度經由一個精密的刻度表，可以準確的調整出鋸片的中心點。

### Tooth Shape Cam 齒形凸輪

- The industrial and professional tooth shape cam is designed through an accurately calculated mimic process of the computer. It makes your saw blade grinding jobs simpler, faster and more accurate. 經過電腦精密計算模擬，所設計出的工業級專業齒形凸輪，使你的鋸片研磨更為簡單、快速精準。

- The grinding head can be adjusted up-and-down, so the chamfer angle can be ground out without changing the grinding wheel. 砂輪頭可以上下擺動，所以可不必更換砂輪，即可研磨出倒角。

- The tungsten-carbide-tipped pushing jaw has maximum wear resistance to maintain the accurate feeding. 推進爪末端焊有碳化鎢，可使進給爪的磨損減至最低，以達到精確的推給。

- Casting of machine are made of ductile iron(FCD-45) for the best wear resistance, tempered and stress relief. 本機所有的鑄鐵均採用球狀石墨鑄鐵(FCD-45)，並經回火處理，以確保精度，及增加耐磨性。

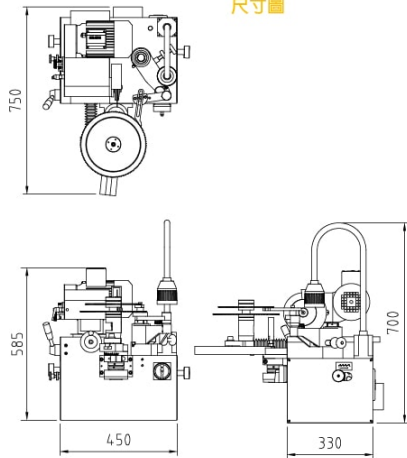
- All of the main parts are made of SKD 11 alloy steel, hardened and precision ground. 主要零件均採用SKD11高碳鋼，並經熱處理研磨。

- The spring of push arm is reformed to ensure the precision of the feeding. Rotary type spring has better resistance from elasticity fatigue. 推臂彈簧經過改良，使用回轉式彈簧，不易彈性疲乏，確保推給準確。

- The support base of the saw blade feeding shaft uses the high thsile brass alloy and embands the high-tech-made solid lubricant inside. It features heavy load capacity and good wear-resistance to accomplish the oil-free feed function. 鋸片推給軸支持座，使用高強度銅合金作基材，埋入高科技技術製造之固體潤滑劑，其高負荷、耐磨耗的特性更達到完全無給油功能。

- The enlarged 30mm feeding shaft is hardened and precision ground. 推給軸使用 $\phi$ 30mm，加大軸心並經熱處理及研磨。

### Measurement 尺寸圖



### Specifications 規格表

Grinding Range 研磨範圍	$\phi$ 65-300mm
Optional accessories 選購配件	$\phi$ 35-100mm
Tooth pitch 齒距	25 mm Max. 最大
Tooth depth 齒深	8 mm
Sawblade Thickness 鋸片厚度	8 mm Under 以下
Grinding speed 研磨速度	Constant speed 定速 90 teeth/min 齒/分鐘
Cutting angle 切削角	0~30°
Grinding wheel diameter 砂輪外徑	$\phi$ 150 mm
Grinding wheel speed 砂輪轉速	50HZ/60HZ 3800/4500 rpm
Grinding wheel motor 砂輪馬達	0.37 KW
Transmission motor 傳動馬達	0.37 KW
Net weight/gross weight 淨重/毛重	130 / 160 kg
Package size 裝箱尺寸	75 x 68 x 72 cm

### Standard Fittings 標準配件

Work lamp 工作燈	1pc 個
Tool box 工具箱	1set 套
Guide Plate 導板	1pc 個
Operation Manual 說明書	1copy 份
Grinding wheel 砂輪	5pcs 片

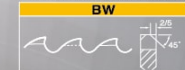
※ All specifications, designs and characteristics shown in this catalogue are subject to change without prior notice. 因設計或製造上的需要，如有變更恕不另行通知。



TOOTH TYPE 齒型  
For Non Ferrous Metal 非鐵用



For Ferrous Metal 鐵用



Applicable for 適用:  
HSS Steel Circular Sawblade  
HSS 高速鋼圓鋸片  
TCT Steel Circular Sawblade  
TCT 碳化鎢鋼圓鋸片



Standard Fittings Ø60  
標準配件 Ø60



Specifications Ø30  
選購配件 Ø30